

Full-composite Epoxy Sleeve Designed for Strengthening and Protection of Offshore Risers & Conductors

Technologically Advanced & Innovative | Diver-less & Online Installation

Cost Effective | Verified as per ASME PCC-2

Helicoid 100

The Helicoid 100 Epoxy Sleeve® system is a high-performance engineered solution for critical pipeline repairs, effectively addressing issues such as leaks, severed sections, and substantial external wall loss. It is capable of repairing areas with up to **100% wall loss**, restoring pipeline integrity, sealing leaks, and bridging severed sections. Utilizing a helically-wound, carbon-fiber reinforced, mechanically-interlocking Polyethylene (PE) strip, it creates a 25mm – 40mm annulus around the pipe. It offers superior reinforcement and enhanced UV resistance, and when combined with our specialized high-strength epoxy, provides exceptional structural integrity. This robust system provides a reliable and efficient method for returning damaged pipelines to service, minimizing downtime and maximizing safety.

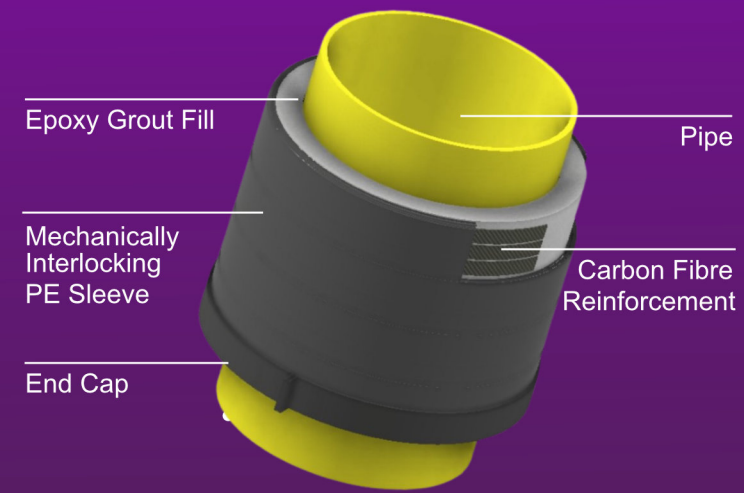


Benefits of the Helicoid 100 Epoxy Sleeve®

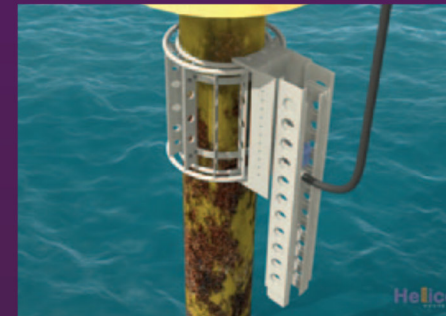
- Cost-effective repair system over pipeline replacement
- Provides Strengthening & Protection for offshore Risers & Conductors
- Diver-less installation for the splash-zone area, up to 5.00m below Mean Sea Level (MSL)
- Simple and fast, in-situ and online installation
- Range of diameters from 6" to 40"
- Lengths of up to 10.00m
- Pre-engineered and off-the-shelf product
- Corrosion and Impact resistant
- Tested in accordance with ASME PCC-2 and independently verified by Lloyd's Register



Helicoid 100

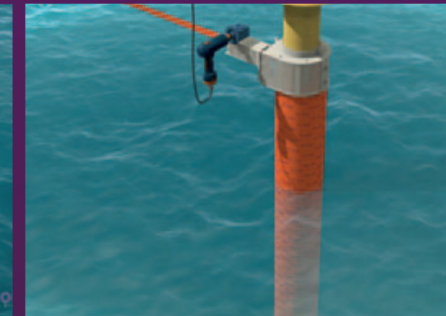


Epoxy Grout Fill Pipe
Mechanically Interlocking PE Sleeve Carbon Fibre Reinforcement
End Cap



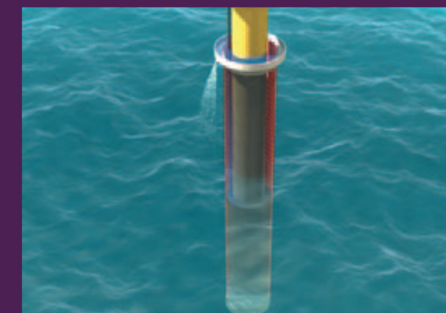
A. Surface Preparation

Installation of the Helicoid Surface Preparation System



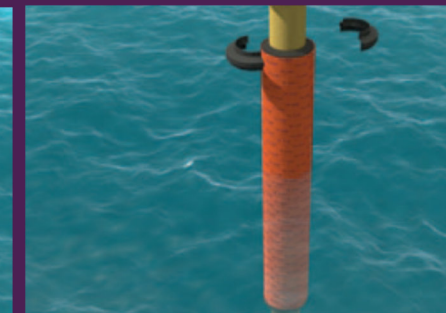
B. Winding of the sleeve

Installation of the winding cage and the sleeve is then wound to its full, required length



C. Grouting process

Application of Epoxy or Cementitious grout, through the tremie method and the top End cap is placed



D. Top End-Cap Installation

Installation of top end-cap after epoxy grout curing



Repairable Candidates

